

# USER MANUAL

## Scent diffuser

### W900 Small – Medium



#### DESCRIPTION/SPECIFICATION

Model : W900 S-M  
Coverage : 0/2500m<sup>3</sup>-2500m<sup>3</sup>/5000m<sup>3</sup>  
Dimensions : 295\*221\*112 mm  
Bottle capacity : 800 ml  
Weight : 1.9 / 2.26 kg  
Power : 6W / 6W  
Voltage : DC12V



Plug      Bottle + cap      PU Tube      Manual      Key

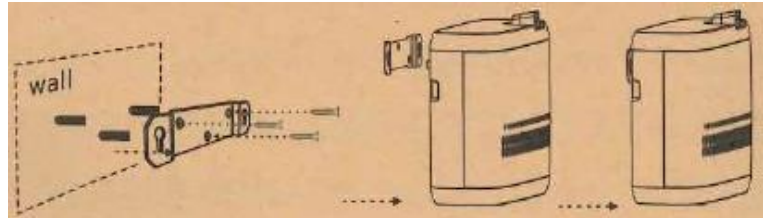
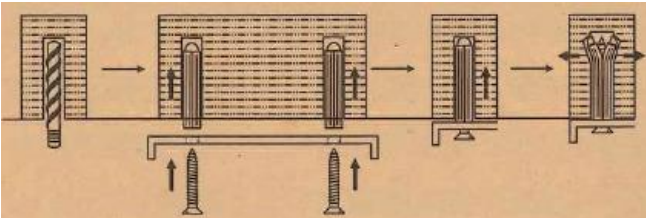


Atomized Nozzle connector      Mounting Bracket      Sealing tape      Screws

Using the tape: before aiming at the diffuser head or connecting the diffuser fitting, put 3-5 turns of sealing tape around it to prevent air leakage.

#### INSTALLATION

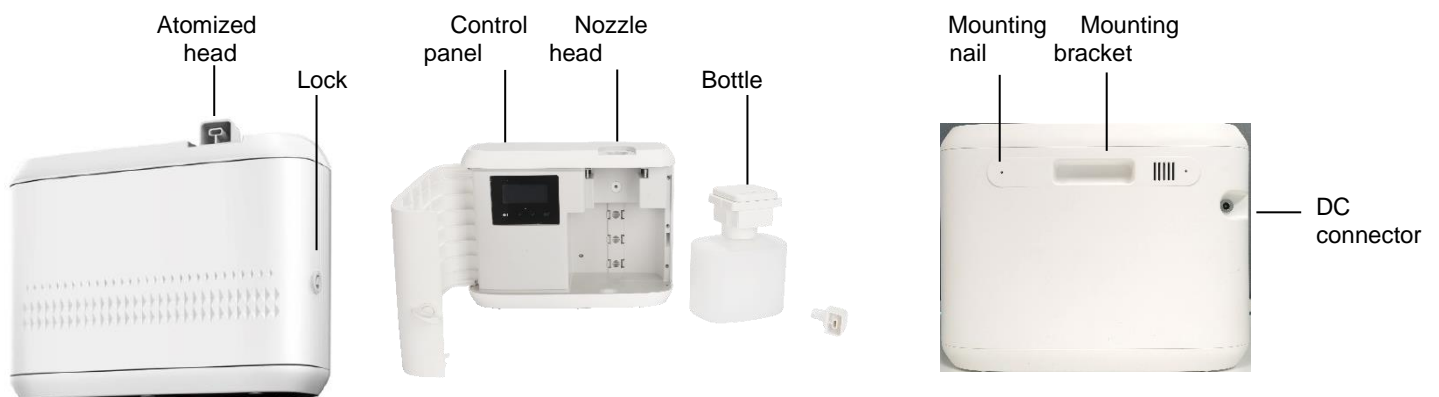
The method of using expansion bolts :



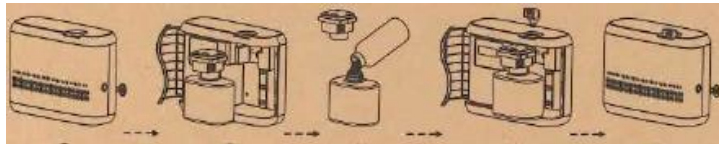
Drill the wall, insert the expansion bolts, place the screws and tighten.

Place the wall mount where you want it, and hang the unit.

#### Overview

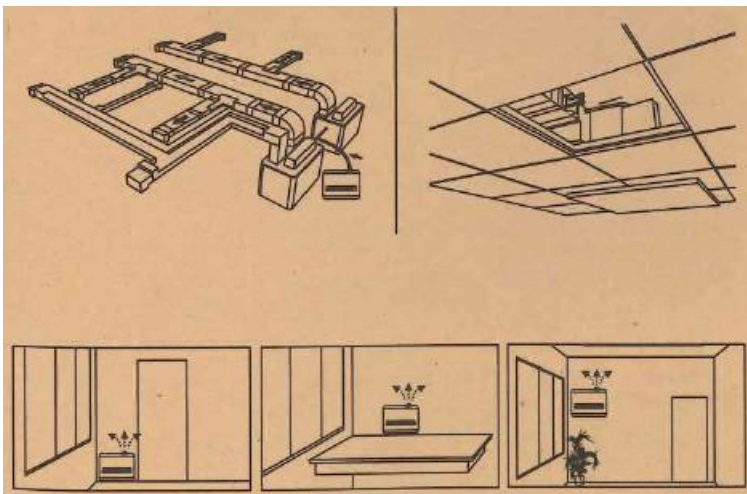


## Instructions



1. Open the door with the key
2. Pull out the bottle with the nozzle head
3. Unscrew the bottle from the nozzle head and refill it
4. Screw the bottle back into the nozzle head and put the atomized head back
5. Configure the time settings and close the W900.

## PLACEMENT



Ideal for hotels, conference rooms, shopping centres, exhibition halls, retail outlets, bars, spas, offices, etc.

## Cleaning

The unit must be cleaned in the following cases:

- Change of liquid
- Low diffusion

## Steps

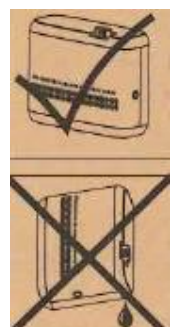
1. Remove the nozzle head and unscrew the bottle.
2. Fill a container with industrial alcohol and immerse the nozzle head and bottle for 5-10 minutes.
3. Allow to air out to room temperature.

## ⚠ Caution

- Do not modify, disassemble or repair. Contact technical service if you have any problems.
- Do not damage the charging cable, bend it, support heavy loads, clip or reprocess it.
- Do not use damaged plug or unmatched with the socket.
- Do not wet the device or the charging port.
- Do not use overloaded power socket, wire or broken plug.
- Do not touch the wire or product shell when thundering/lightening.
- Do not disassemble the device when it is under operating.

## WARNING

1. Do not tilt or lie down the appliance as this may cause leaks and damage its operation.
2. The button is invalid and no display on screen when machine locked.
3. The screen is lit even during off work time periods.
4. If the display bugs, freezes, or otherwise, restart the unit to reset to defaults (Press ENT button for 5sec until it beeps).



## REPAIRING

Before sending your appliance for repair, make an initial diagnosis of the problem encountered:

MALFUNCTIONS	SOLUTIONS
Stopped the diffusion	<ul style="list-style-type: none"><li>- Check if the chosen mode is correct</li><li>- Check if the machine is in non-operating mode</li><li>- Air pump may be damaged, replace it</li><li>- Check if the suction tube is loose</li></ul>
Low diffusion	<ul style="list-style-type: none"><li>- The head/diffuser connection is blocked. Clean or replace it</li><li>- Damaged/disassembled gasket</li><li>- Check if the suction tube is loose</li></ul>
Leak of liquid	<ul style="list-style-type: none"><li>- Check if the bottle is well tighten</li><li>- Damaged/disassembled gasket</li></ul>
Sprinkles of liquid	<ul style="list-style-type: none"><li>- Nozzle head be damaged, replace it</li><li>- Tilted/lying machine: place vertically</li></ul>
Abnormal noise	<ul style="list-style-type: none"><li>- Check that the suction pump is well tighten</li><li>- Suction pump may be damaged: replace it</li></ul>

## CONCENTRATION & CONSOMMATION

<Grade	Work (sec)	Intervals (sec)	Consumption (ml/h)	
			W900 Small	W900 Medium
G1	15 s	300 s	0.10	0.1
G2	15 s	150 s	0.14	0.2
G3	20 s	120 s	0.18	0.3
G4	20 s	85 s	0.22	0.4
G5	25 s	80 s	0.26	0.5
G6	30 s	75 s	0.30	0.6
G7	30 s	60 s	0.34	0.7
G8	30 s	50 s	0.38	0.8
G9	30 s	40 s	0.45	0.9
G10	30 s	33 s	0.50	1.0
G11	33 s	30 s	0.55	1.1
G12	40 s	30 s	0.60	1.2
G13	50 s	30 s	0.65	1.3
G14	60 s	30 s	0.70	1.4
G15	75 s	30 s	0.75	1.5
G16	80 s	25 s	0.80	1.6
G17	85 s	20 s	0.85	1.7
G18	120 s	20 s	0.90	1.8
G19	150 s	15 s	0.95	1.9
G20	300 s	15 s	1.0	2.0
Customized grade	5-500 s	5-500 s		

Δ Up grade ∇ Down grade

Above datas are based on tests.

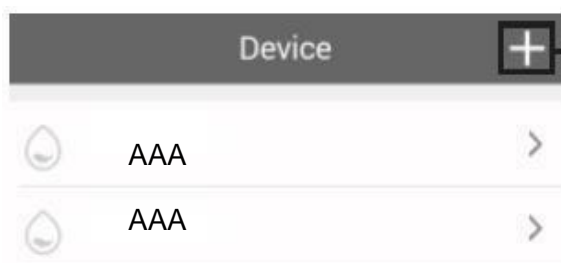
Consumption data is for reference only. Different fragrance may be coming with different consumption.

## APP INSTRUCTIONS

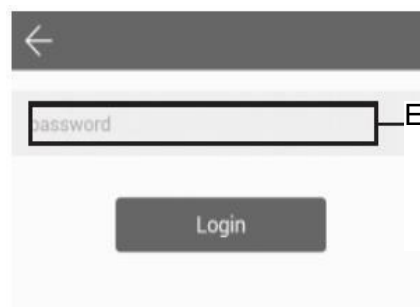


Download the application by searching for "Scent Marketing" on Google Play or App Store.  
For the application to work on your mobile phone, you must activate geolocation before starting it.

(Il y a 5 places horaires disponibles).



Add a device



Enter your password

Select "Setting"



Change the diffuser name

Name AAA

Notes : (for example : location...)

Label AAA

Delete a working time period



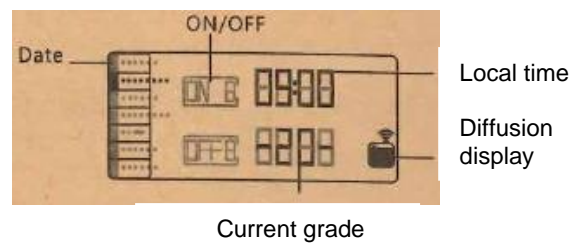
07:00-21:00 Grade: 09  
Mon Tue Wed Thur Fri Sat Sun



Add a working time period  
Timer

After selecting the grade, **ALWAYS SAVE** before returning to the home page.

**Time settings**



**Power On/Off**

Connect power supply in the unit. Press ON until the beep, and the screen displays initial time and the current broadcast grade. The display turns off when the unit is unplugged.

**Fan On/Off**

Touch Δ button 3 sec to turn the fan on and touch ∇ button 3 sec to turn the fan off.

**Auto-lock and un-lock**

Automatic locking after 60 seconds without manipulation.  
Touch SET 5 sec until the beep is heard, then the display lights up to unlock the device.

**Local time setting**

Touch SET button 3 sec until it beeps. Set the day by touching Δ/∇ buttons and touch ENT button for local time setting bu touching Δ/∇ buttons (Fig1).

**Concentration grade setting**

There are 20 grades available. Touch Δ button to increase grade, and ∇ button to decrease grade (Fig2).

**Work time period setting**

There are 5 working periods available to be set every day (Fig3). Touch SET button to set working period (ON1), touch Δ/∇ buttons to choose working period (1-5) ; touch ENT button for the working period switch, touch Δ/∇ to choose ON or OFF, touch ENT button again to move to the operation time, touch Δ/∇ to adjust number.

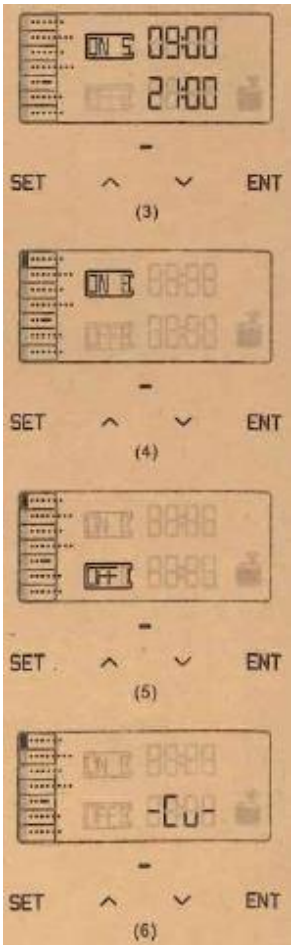
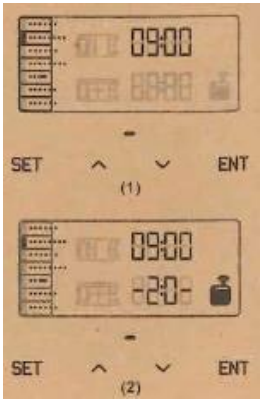
Touch ENT again for grade. Next, touch ENT to choose the day (MON), touch Δ button to turn on the working period (ON1) (Fig4), touch ∇ button to turn off the working period (OFF1) (Fig5). Touch ENT to move to the next day and repeat the steps for the other days (TUES-SUN).

Once finish, touch SET to confirm and exit. Repeat the same setting steps of ON1 for ON2-ON5.

PS : Grade display with -Cu- is for customized grade set by APP only (Fig6). The device doesn't work when the start working period is as same as stop working period.

Working time period	00:00-00:00	00:00-00:00	00:00-00:00	00:00-00:00	00:00-00:00
Monday	ON / OFF	ON / OFF	ON / OFF	ON / OFF	ON / OFF
Tuesday	ON / OFF	ON / OFF	ON / OFF	ON / OFF	ON / OFF
Wednesday	ON / OFF	ON / OFF	ON / OFF	ON / OFF	ON / OFF
Thursday	ON / OFF	ON / OFF	ON / OFF	ON / OFF	ON / OFF
Friday	ON / OFF	ON / OFF	ON / OFF	ON / OFF	ON / OFF
Saturday	ON / OFF	ON / OFF	ON / OFF	ON / OFF	ON / OFF
Sunday	ON / OFF	ON / OFF	ON / OFF	ON / OFF	ON / OFF

The first working period is factory defaults with start working time 07:00 and stop working time 19:00, grade 1 , the rest are all with 00:00.



## AMEND PASSWORD

*If you forget the password, press "reset" to restore factory settings. To do this, press and hold (3 sec) the "ENT" button on the control panel until you hear a "BEEP". The default password is 8888.*

Go to "Device Control" :

Click on "About"

Click on "change password"

Enter your new password

Confirm the new password

Save