

# USER MANUAL

## ELINA Scent Diffuser



Bluetooth indicator :

- Catch the signal : FLASH
- Connected : Light ON
- Disconnected : Light OFF

### CONCENTRATION & CONSUMPTION

Grade	G1	G2	G3	G4	G5
Intervals (minutes)	15	13.5	12	10.5	9
Grade	G6	G7	G8	G9	G10
Intervals (minutes)	7.5	6	4.5	3	1.5

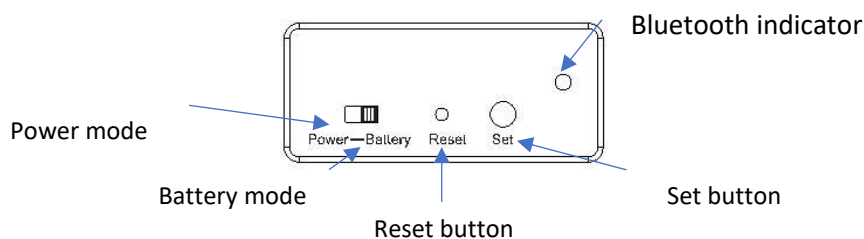
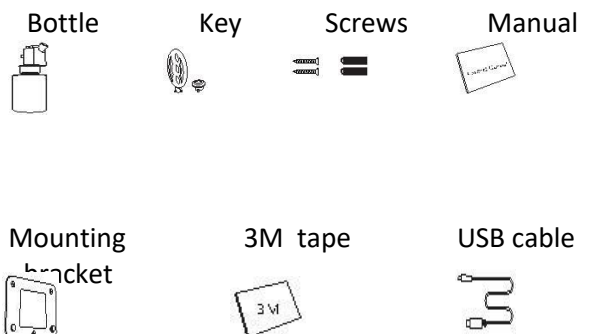
#### Notes:

- Above grade atomization work time is 3 seconds.
- 100gr fragrance can diffuse 6300 to 6700 times under normal circumstances.
- Consumption varies depending on the grade and the fragrance.

### DESCRIPTION

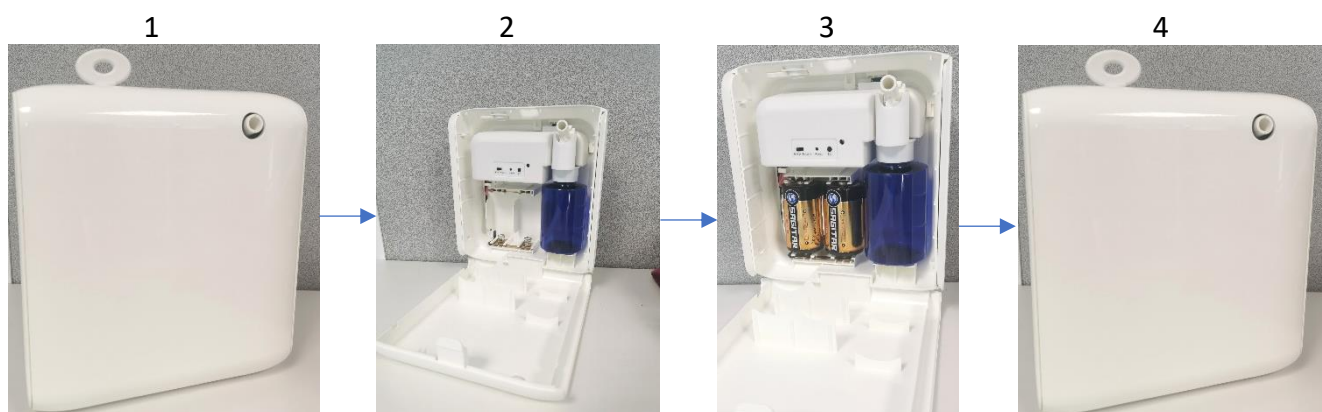


Dimensions: 160 x 148 x 60mm  
Weight: 530 gr  
Refill: 100ml  
Coverage: 600 m3  
Power: set of 2 LR20 batteries  
Or USB 5V cable

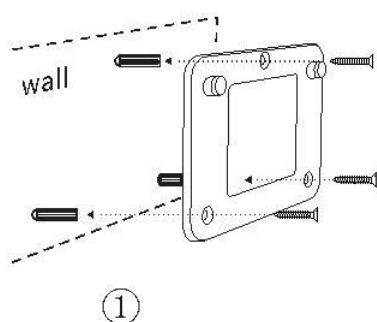




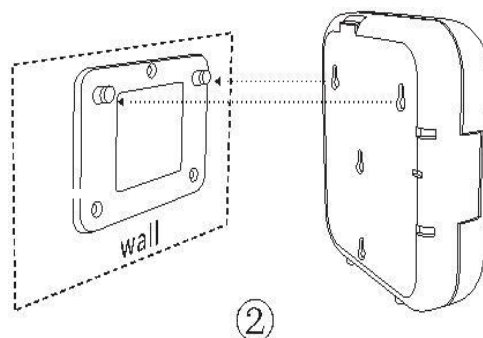
## INSTALLATION



1. Insert the key, rotate it to "OPEN" and then pull it out. Press the fixed button on the top and open the machine.
2. Tightly connect the atomizer head and the fragrance bottle, and install those in the machine as shown above.
3. Choose "POWER MODE" or "BATTERY MODE", plug in or insert the batteries. If you choose the Power Mode, wait about 12 minutes to let the machine charge for the first use. When using the "BATTERY MODE" with the set of batteries, do not plug the machine at the same time.
4. Insert the key, rotate it to "CLOSE" to lock the machine before using it.



Fix the 3 screws to the wall and place the mounting bracket



Hang the machine on the bracket

Warning: If you use the tape instead of the screws, press it around 1 minute so it sticks well to the wall, and then hang the machine on.

## EQUIPMENT CLEANING

The machine needs to be cleaned when below situations happen:

- You're about to change to another kind of fragrance
- The atomization volume becomes low.

Cleaning steps:

- Pull out the atomized head, unscrew the bottle
- Refill the bottle with 15% of industrial alcohol and make it diffuse 5-10 times
- Airing the atomized head and the bottle.

## INSTRUCTIONS

### Where to get the APP:

Please search “**scent marketing**” on Google Play or App Store. You must activate the geolocation on your phone for the app to work.



Device → Add a device

AAA >  
AAA >

Select “SETTING”

← Device Setting Save  
Setting About

Change the diffuser name

Name  
AAA

Notes: location

Label  
AAAAAA



Delete a working period — X

Add a working period

07:00-21:00 Grade: 09  
Mon Tue Wed Thur Fri Sat Sun

Timer

←

password

Login

Password



(PS :There are 5 working periods available)

After selecting the grade,  
**ALWAYS SAVE** before going back  
To the home page.

### Working periods settings

← Working period setting Save → Save

Start working time Stop working time

04

05

06

07

08

:

00

01

02

03

00

:

01

02

03

Choose working hours

Select the day

Repeat

Mon

Tue

Wed

Thur

Fri

Sat

Sun

Diffusion grade

Concentration grade

^ 6 v

Select the grade (grade 1, 2, 3....)

## MODIFY THE PASSWORD

*If you forget the password, please press the reset button to restore the factory settings. The factory settings password is 8888.*

Go to "Device Control"

Click on "About"

Click on "Change Password"

Indicate your new password

Confirm the new password

Click here to save.



### WARNING

1. Always keep the machine vertical. Tilt or lie flatly may cause an overflow of liquid. The machine efficiency may be affected.
2. Do not modify, disassemble or repair the machine yourself. If any failure happens, please contact our technical personnel.
3. When the machine is used for the first time or hasn't been used for more than 7 days, the controlling board is out of power. Please insert the batteries/plug in and wait for 1-2 minutes, the machine will be back on automatically.



## REPAIRING

Before asking to have the machine repaired, please try to diagnose the problem following below instructions:

BREAKDOWN	SOLUTIONS
Does not diffuse anymore	<ul style="list-style-type: none"><li>- Check whether or not the mode you chose is correct.</li><li>- Check if the machine is on "non working time".</li><li>- Air pump may be damaged, replace it.</li><li>- Check if the tube is loose.</li></ul>
Low diffusion	<ul style="list-style-type: none"><li>- The atomizing core is blocked, clean it with alcohol or change the component.</li><li>- Check whether or not the gasket is damaged/loose.</li><li>- Check whether the tube is loose or not.</li></ul>
Leak of liquid	<ul style="list-style-type: none"><li>- Check whether the bottle is loose or not.</li><li>- The gasket in the atomized head is damaged or loose.</li></ul>
Liquid sprinkle	<ul style="list-style-type: none"><li>- The atomized head is damaged, replace it.</li><li>- The machine is tilted or lying down, keep it vertical.</li></ul>
Abnormal noise	<ul style="list-style-type: none"><li>- The air pump is loose, retighten it.</li><li>- The air pump is damaged, replace it.</li></ul>