



Corsivo™ Sit-Stand Workstation



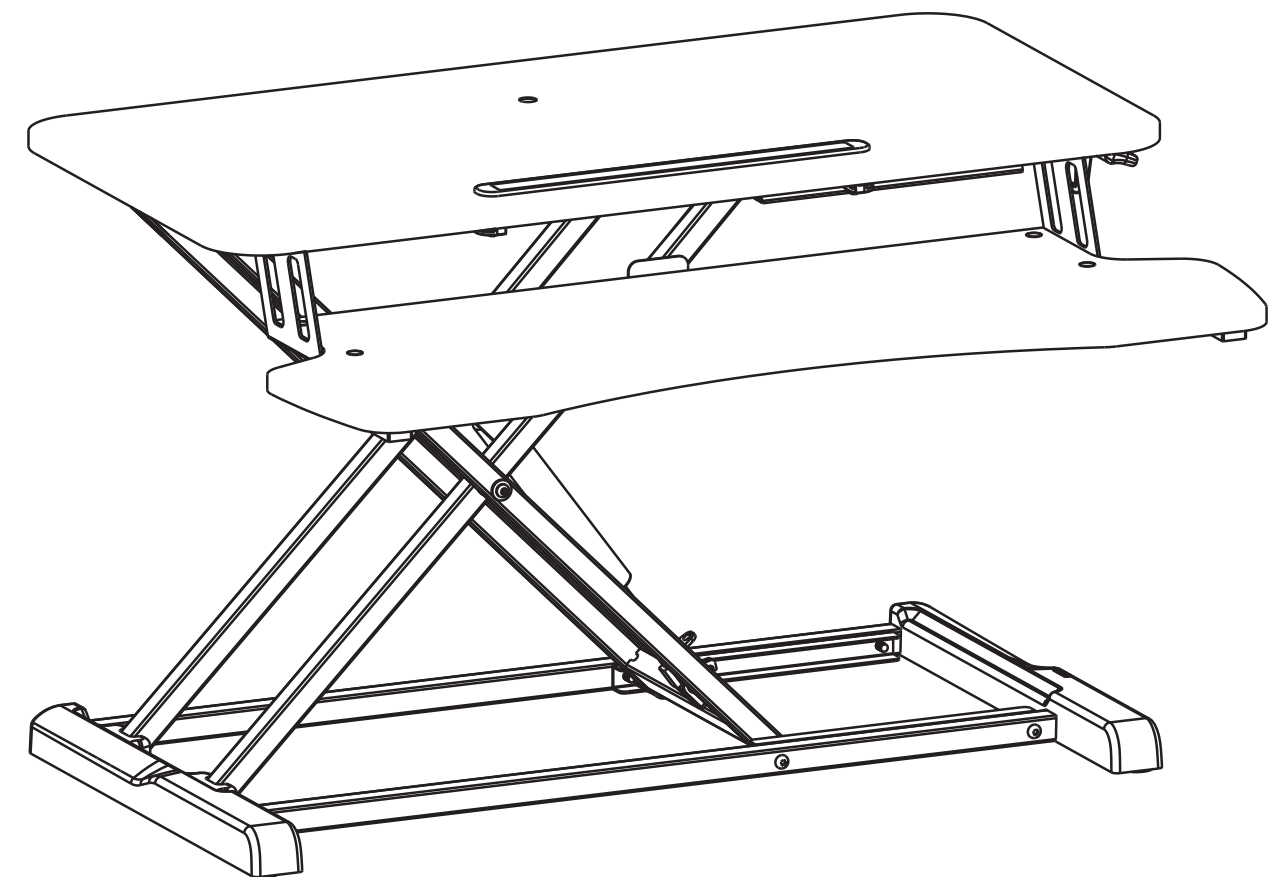
CUSTOMER SERVICE & SUPPORT

www.fellowes.com

U.S.: 1-800-955-0959

Canada: 1-800-665-4339

Mexico: 001-800-514-9057



PLEASE READ THESE INSTRUCTIONS BEFORE USE.
DO NOT DISCARD: KEEP FOR FUTURE REFERENCE.

LIRE CES INSTRUCTIONS AVANT UTILISATION.
NE PAS JETER : CONSERVER POUR FUTURE RÉFÉRENCE.

LEER ESTAS INSTRUCCIONES ANTES DEL USO.
NO DESECHAR: GUARDAR PARA FUTURA REFERENCIA.



1789 Norwood Avenue, Itasca, Illinois 60143 • 1-800-955-0959 • www.fellowes.com

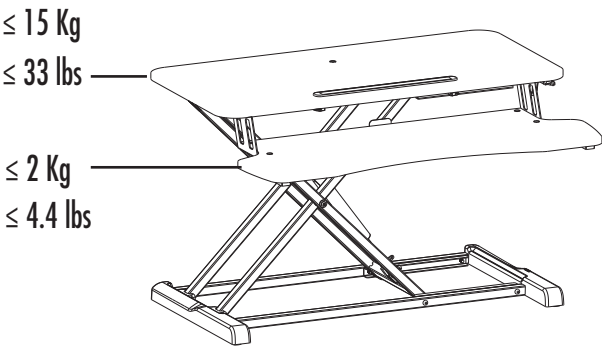
© 2019 Fellowes, Inc. | Part #411433

SAFETY INSTRUCTIONS/WARNINGS

Read and follow all instructions and warnings before use.



- **WARNING: PINCH POINT! KEEP HANDS CLEAR OF SUPPORT BARS DURING OPERATION. SERIOUS INJURY MAY OCCUR.**
- **DO NOT EXCEED MAXIMUM STATED WEIGHT CAPACITY. SERIOUS INJURY OR PROPERTY DAMAGE MAY OCCUR.**
- Keep cables clear of support bars during operation, follow the cable routing instruction in this manual. Failure to follow these instructions may result in equipment damage or personal injury.
- **DO NOT** lean on the keyboard platform.
- Always use both hands when operating the workstation.
- Make sure the desk or mounting surface is level and can support the combined weight of the workstation and accessories.
- Remove all equipment and accessories from the workstation before moving.
- Only compatible with Fellowes Monitor Arm Kit for Lotus.
- Manufacturer certifies that product meets or exceeds applicable ANSI/BIFMA standards.

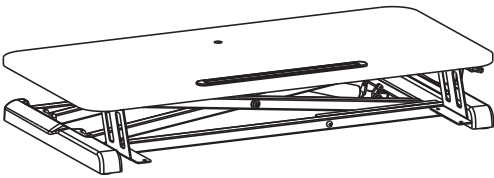


CONTENTS

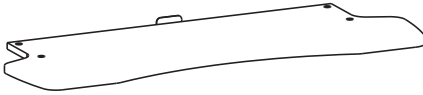
Included

- A Workstation
- B Keyboard Platform
- C Threaded Insert/M5x10mm Pan Head Phillips Screw
- D Adhesive Cable Clips
- E Foam Pads
- F Rubber Feet

Other Tools Required
Phillips Screwdriver



A (x1)



B (x1)



C1/C2 (x4)



D (x4)



E (x3)

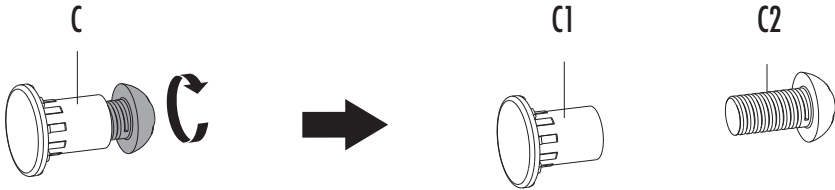


F (x4)

SET UP

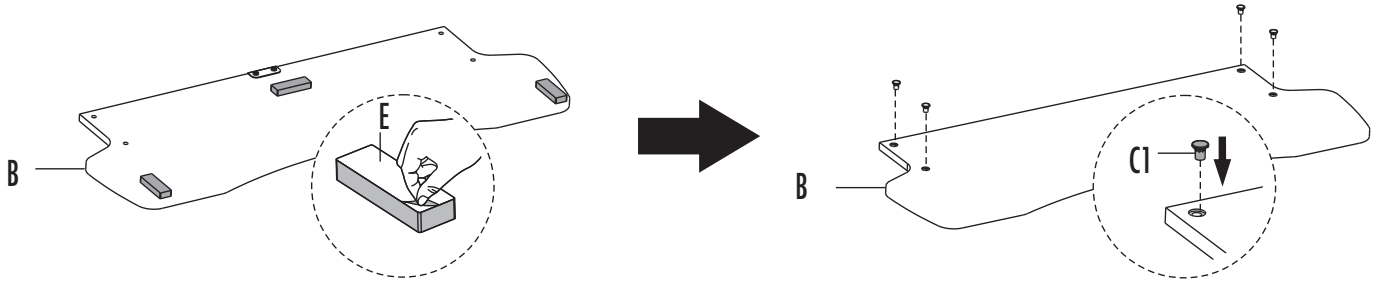
STEP 1

Remove four M5x10mm pan head Phillips screws (C2) from threaded inserts (C1) using a Phillips screwdriver.



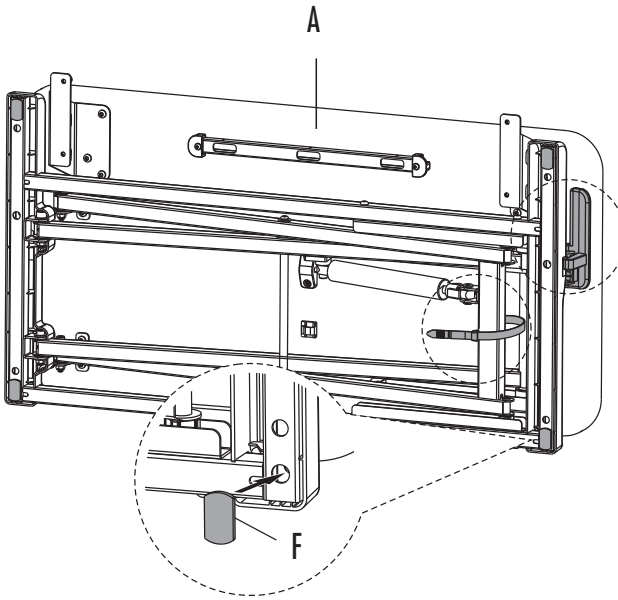
STEP 2

Prepare the keyboard platform (B) by applying three foam pads (E) to the bottom surface as shown in the first image. Turn the keyboard platform (B) upright and insert four threaded inserts (C1) into the top surface.

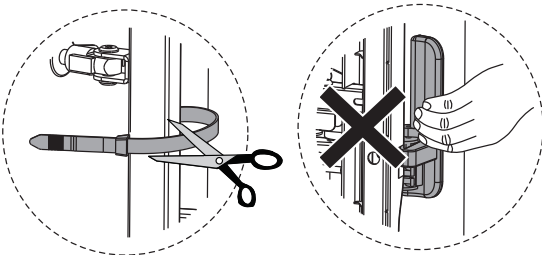


STEP 3

Apply four rubber feet (F) to the bottom of workstation (A) and remove plastic strap.

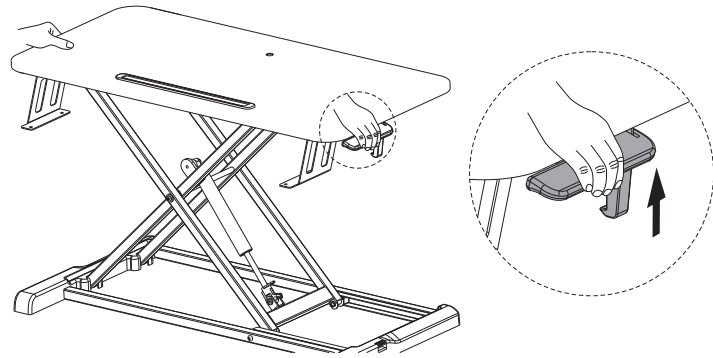


CAUTION: Do Not engage the handle when removing the plastic strap. Only engage the handle when the product is in the upright position.



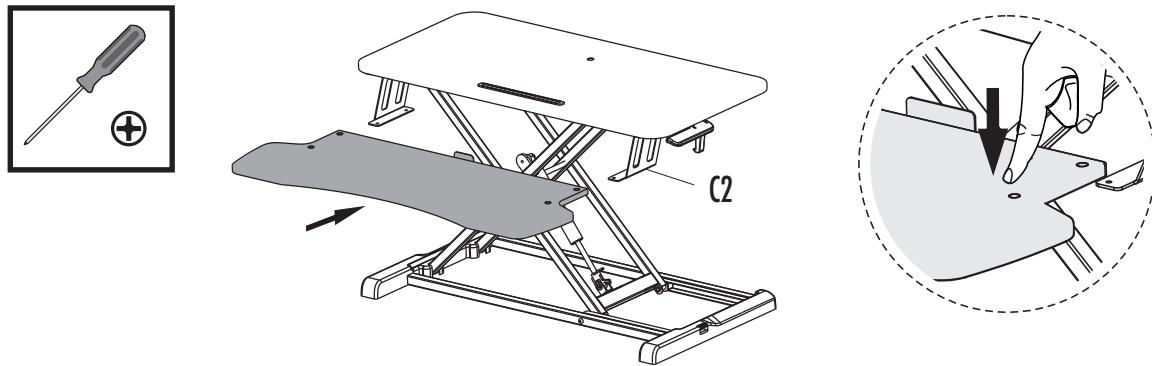
STEP 4

With workstation (A) on a flat stable surface, engage the handle and raise the workstation to the highest setting.



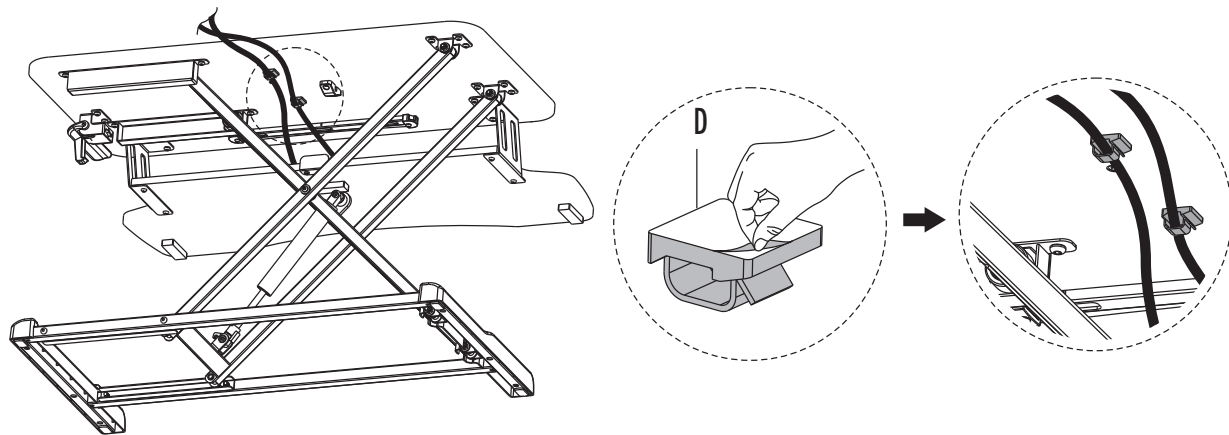
STEP 5

Place the keyboard platform (B) onto workstation (A) and ensure all four holes align. Once aligned, install four M5x10mm pan head Phillips screws (C2) using a Phillips screwdriver.



STEP 6

While the workstation is at the highest position, route your cables using the adhesive cable clips (D) to ensure cables are not pinched by the support bars. Make sure the cables are long enough to accommodate the full range of motion (16"/406mm).



FELLOWES CORSIVO™ SIT-STAND 3-YEAR WARRANTY

Fellowes, Inc. (the “Company”) warrants this product to be free from defects in material and workmanship appearing within three (3) years from the date of the original purchase of the product. If such a defect appears during the warranty period, the Company will (at its sole option) either repair or replace the defective product with no charge for service or parts or refund the purchase price.

This warranty applies only to the initial retail purchaser and does not cover claims resulting from misuse, failure to follow instructions on installation and use, neglect, use of unauthorized attachments, commercial use, use on a current or voltage other than specified on the product, or unauthorized service during the warranty period on conditions otherwise covered by warranty.

THE DURATION OF ANY IMPLIED WARRANTIES, INCLUDING BUT NOT LIMITED TO ANY IMPLIED WARRANTIES OF MERCHANTABILITY OR FITNESS FOR A PARTICULAR PURPOSE, IS EXPRESSLY LIMITED TO THE DURATION OF THIS LIMITED WARRANTY.

UNLESS REQUIRED BY APPLICABLE LAW, THE CUSTOMER’S EXCLUSIVE REMEDY FOR BREACH OF THIS WARRANTY OR ANY IMPLIED WARRANTY OR OF ANY OTHER OBLIGATION ARISING BY OPERATION OF LAW OR OTHERWISE SHALL BE LIMITED AS SPECIFIED HEREIN TO REPAIR, REPLACEMENT OR A REFUND OF THE PURCHASE PRICE, AT THE COMPANY’S SOLE OPTION.

UNDER NO CIRCUMSTANCE WILL THE COMPANY, ITS AFFILIATES, SUBSIDIARIES, RELATED ENTITIES, RESELLERS OR THEIR RESPECTIVE OFFICERS, DIRECTORS OR EMPLOYEES OR THOSE PERSONS FOR WHOM THEY ARE BY LAW RESPONSIBLE, BE LIABLE FOR CONSEQUENTIAL OR INCIDENTAL DAMAGES SUSTAINED IN CONNECTION WITH THE PRODUCT. THE COMPANY AND THESE OTHER PARTIES DO NOT ASSUME OR AUTHORIZE ANY REPRESENTATIVE OR OTHER PERSON TO ASSUME FOR ANY OF THEM ANY OBLIGATION OR LIABILITY OTHER THAN AS IS EXPRESSLY SET FORTH HEREIN.

The duration, terms and conditions of this warranty are valid worldwide, except where different limitations, restrictions or conditions may be required by local law.

Australia Residents Only:

Our goods come with guarantees that cannot be excluded under the Australian Consumer Law. You are entitled to a replacement or refund for a major failure and for compensation for any other reasonably foreseeable loss or damage. You are also entitled to have the goods repaired or replaced if the goods fail to be of acceptable quality and the failure does not amount to a major failure. The benefits under Fellowes’ Warranty are in addition to other rights and remedies under a law in relation to the product.